



ELECTRIC ALL-TERRAIN LITTER VACUUM

LN50 VEV

Lithium battery pack with up to 9 hours autonomy

Madvac®

Sourcewell
Formerly NJPA

canoe
procurement group of canada

awarded contract vendor

www.madvac.com



From concrete to grass,
the electric LN50 can tackle all
types of urban terrain with ease

- Parks
- Sidewalks
- Bike & pedestrian lanes
- Parking lots
- Curb side
- Alleys
- Pathways
- Alongside buildings



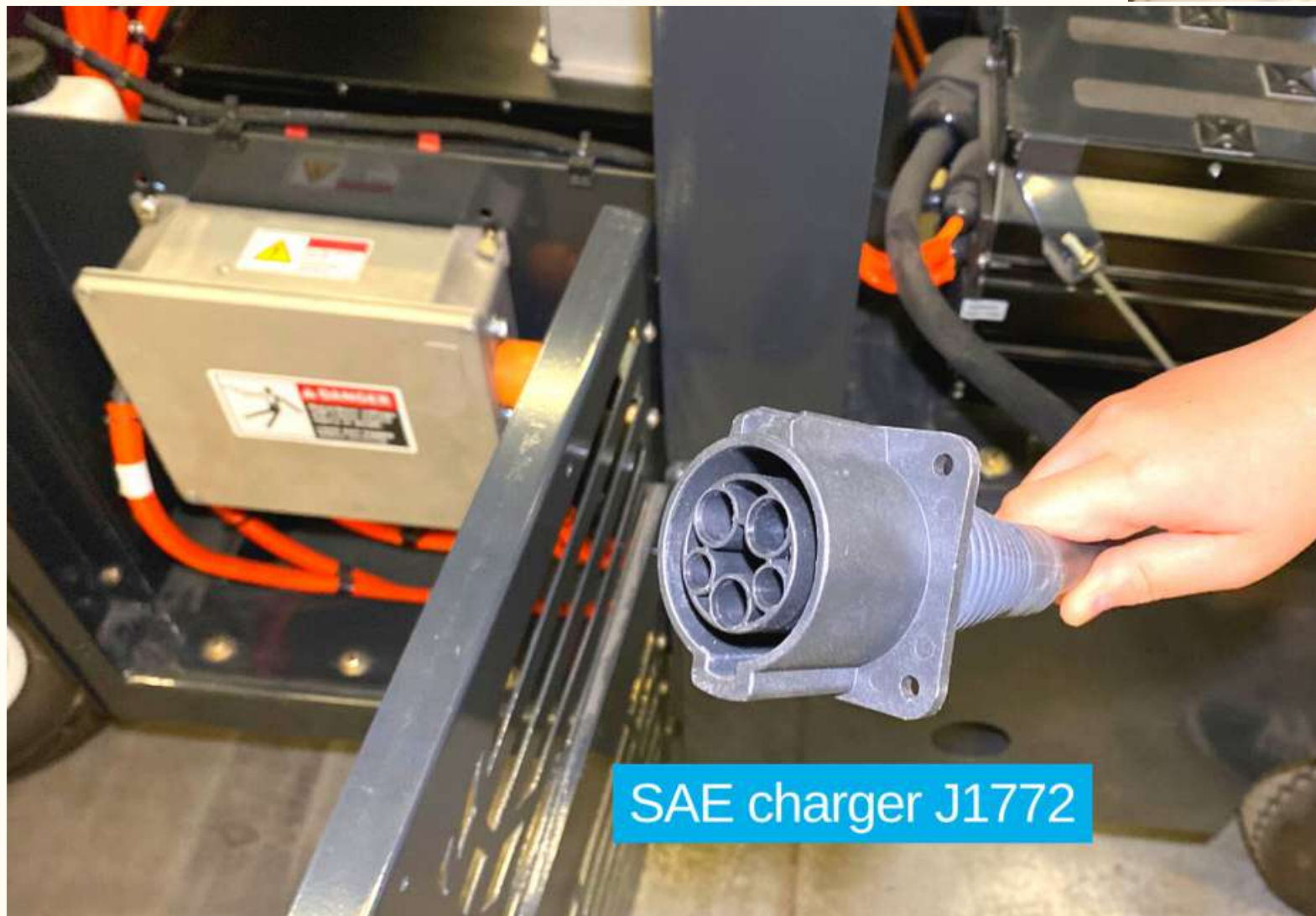
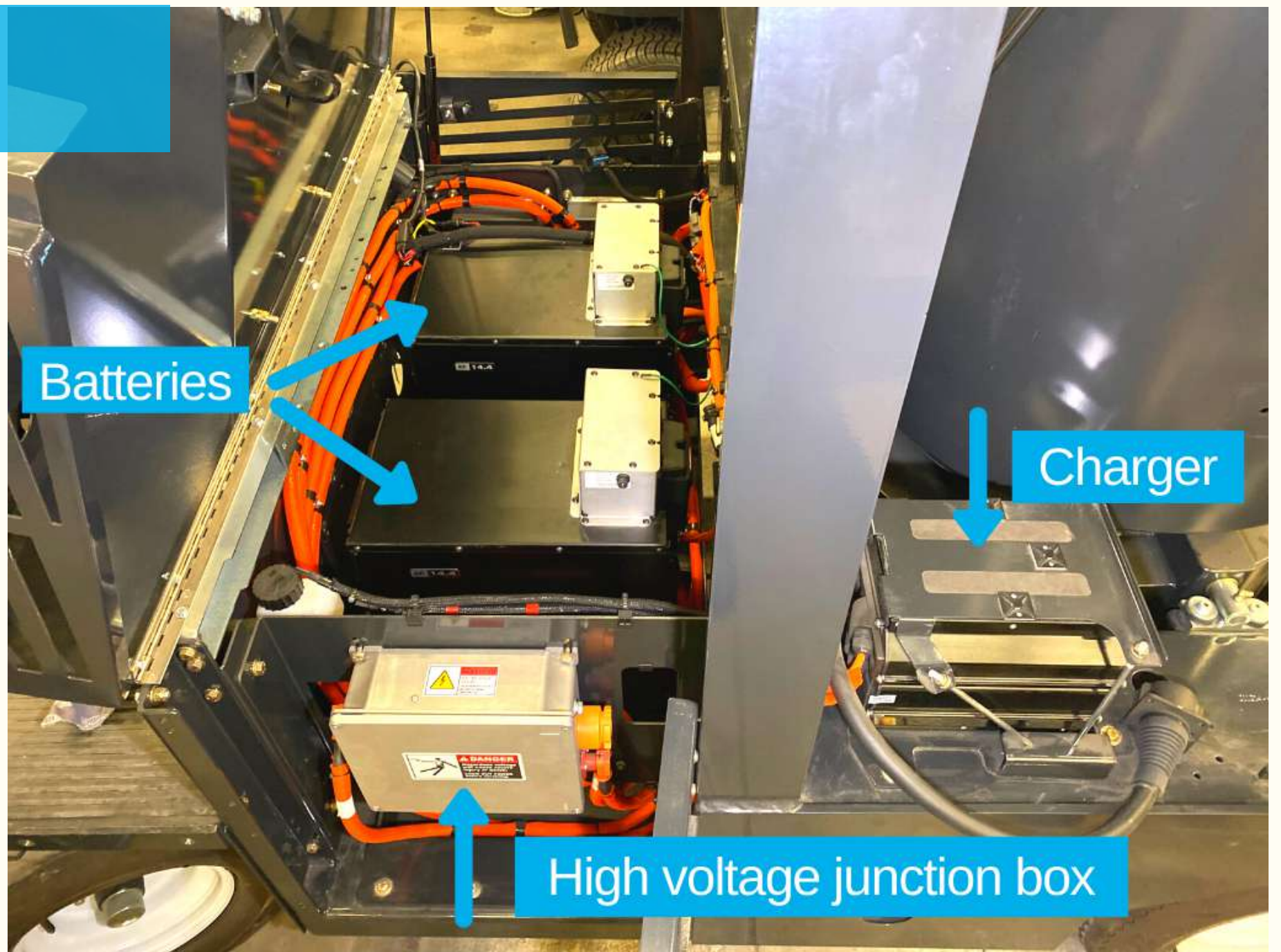
LN50 is the
perfect all-
terrain litter
solution for

- Cities & municipalities
- Outdoor cleaning contractors
- Airports & seaports
- Transit authorities
- Healthcare services
- Distribution centers
- Shopping malls
- Educational & sports facilities
- Manufacturing facilities
- Amusement parks
- Casinos
- Military
- Correctional facilities



Key attributes

- LN50 runs using one of the best compact battery models on the market - Lithium-Ion nickel manganese cobalt (Li NMC), providing up to 9 hours of autonomy and 3 times better "energy per weight and volume" ratio in the industry;
- Significant noise reduction compared to diesel model - operator dB 85;
- LN50 is the closest equivalent to the now-discontinued Tennant ATLV 4300;
- Collects litter dry, humid or wet with productivity 6 times faster than manual litter picking;



- Effortless litter removal using 48 in. (1219 mm) wide vacuum head;
- 15 ft. (4.57 m) retractable wander hose for confined, hard-to-reach areas;
- A CDL permit is not required to operate this machine;
- Fully street legal lighting;
- 10 to 12 year lifespan;
- OEM spare parts shipped within 48 hours;
- Madvac has a 30+ years track record of success - when your machine is due for replacement we'll still be around.

Built to suit your needs

Configure the LN50 according to your specific requirements

- 48 in. (1219 mm) vacuum head
- Retractable wander hose
- Litter collector bags or bagless debris system (Kevlar bin)
- Water mist system (additional dust control)
- Overhead sunshield roof
- Heated seat
- Tire flatproofing
- Fire extinguisher





Madvac LN50 VEV

Data & Performance Information

Power	
Power pack	Lithium-Ion nickel manganese cobalt (Li NMC) high energy capacity, up to 28.8 kw/h
Voltage	102 volts battery packs (2)
Charger	Integrated chargers 6kW on board
Charger outlet	J1772 level 2, 240V/24A
Charging time	5 hours (15-18 h if 120-v wall socket)
Autonomy	Up to 9 hours

Litter Collection System	
Type	Straight-through system compacts litter at 2:1 ratio
Litter capacity	75 gal. (284 L)
Container construction	16 gauge powder-coated steel
Vacuum hose	7 in. (178 mm)
Wander hose	Diameter: 6 in. (152 mm); length: 15 ft. (4.57 m)
Bagless system	Kevlar bin can be filled and emptied into off-the-shelf bags

Frame and Body	
<ul style="list-style-type: none">Heavy gauge steel body on a welded 1/4 in. (6.35 mm) structural steel frameElectrostatic powder-coated paint	

Dimensions	
Width	48 in. (1219 mm)
Length	96 in. (2438 mm)
Height	92 in. (2337 mm)
Wheelbase	69 in. (1753 mm)
Ground clearance	10 in. (254 mm)

Vacuum System	
Vacuum rating	Up to 1800 CFM
Controls	
Steering	Power assisted
Propulsion	Forward, neutral, reverse; push button shifter

Traction	
Drive	Propulsion with 17 to 1 ratio
Forward speed	12 mph (19 km/h)
Tires (all 4 wheels)	Regular 20.5 in. (521 mm); Turf 20 in. (508 mm)
Brakes	Drum service brakes with magnetic parking brake
Gradeability	11.3 degree (20%)
Curb weight	2356 lbs (1069 kg)

Suspension	
Front	Leaf spring
Rear	Leaf spring

dB Rating (front)	
Cabin	85 dB
10 feet away	71 dB



Proud manufacturer of the Madvac product line

Telephone: <ul style="list-style-type: none">1-855-651-0444 (toll free - US/Canada)1-450-651-0444 (international) Fax: 450-651-0447 Email: info@exprolink.com	Address: 2170 Rue de la Province Longueuil QC Canada J4G 1R7 Website: www.madvac.com Sourcwell (US) and Canoe (Canada) contract vendor number: 093021-EXP
--	---

Technical specs are subject to change without prior notice