



ELECTRIC ALL-TERRAIN LITTER VACUUM

LR50 VEV

Lithium battery pack with up to 9 hours autonomy

 **Madvac**®

Sourcewell 
Formerly NJPA

 **canoe**
procurement group of canada

awarded contract vendor

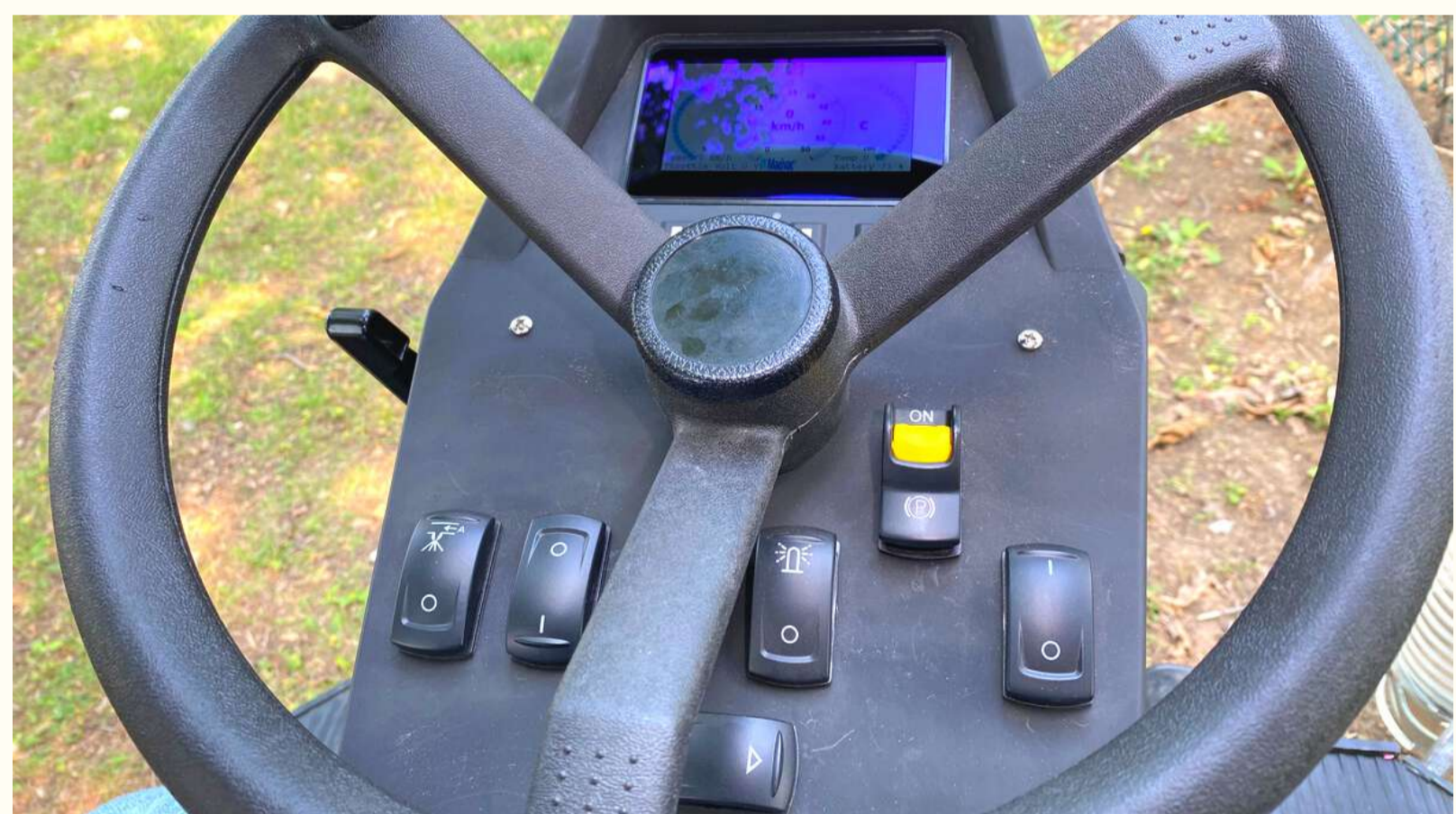
www.madvac.com

From concrete to grass, the electric LR50 can tackle all types of urban terrain with ease

- Parks
- Sidewalks
- Bike & pedestrian lanes
- Parking lots
- Curb side
- Alleys
- Pathways
- Alongside buildings

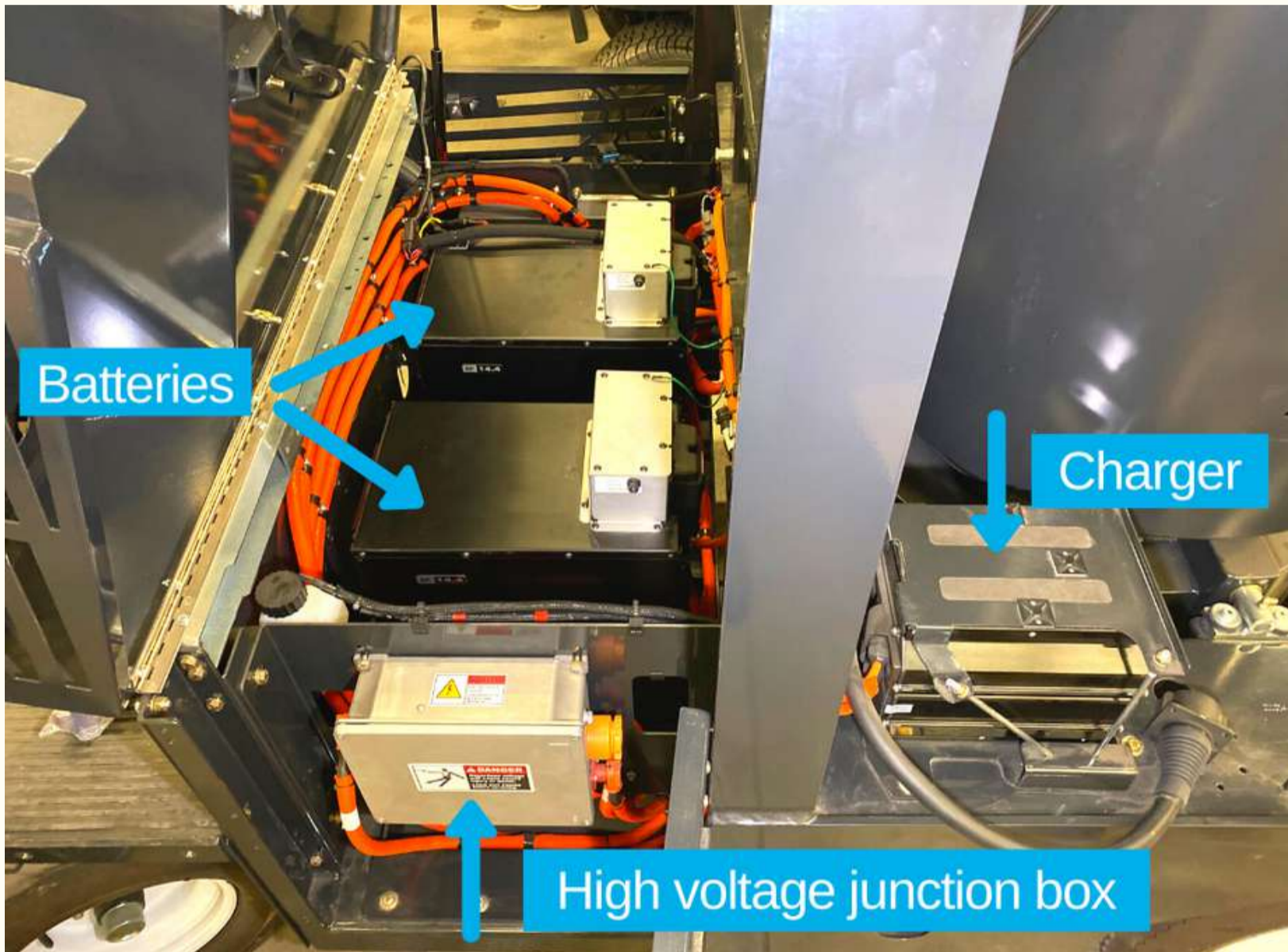


Ergonomic 6-position robotic joystick allows effortless displacement of the boom



LR50 is the perfect all-terrain litter solution for

- Cities & municipalities
- Outdoor cleaning contractors
- Airports & seaports
- Transit authorities
- Healthcare services
- Distribution centers
- Shopping malls
- Educational & sports facilities
- Manufacturing facilities
- Amusement parks
- Casinos
- Military
- Correctional facilities



Key Attributes

- LR50 runs using one of the best compact battery models on the market - Lithium-Ion nickel manganese cobalt (Li NMC), providing up to 9 hours of autonomy and 3 times better "energy per weight and volume" ratio in the industry;
- Significant noise reduction compared to diesel model - operator dB 85;
- Robotic vacuum arm with 6-position joystick makes litter picking easy and injury free;
- Closed cabin (vinyl doors) with climate control options for operator comfort;
- Productivity 6 times faster than manual litter picking;
- Collects litter dry, humid or wet;
- Effortless litter removal using 48 in. (1219 mm) wide vacuum head;
- 15 ft. (4.57 m) retractable wander hose for hard-to-reach areas;
- A CDL permit is not required to operate this machine;
- Fully street legal lighting;
- 10 to 12 year lifespan;
- OEM spare parts shipped within 48 hours;
- Madvac has a 30+ years track record of success - when your machine is due for replacement we'll still be around.

Built to suit your needs

Configure the LR50 according to your specific requirements

- 48 in. (1219 mm) vacuum head
- Retractable wander hose
- Litter collector bags or bagless debris system (Kevlar bin)
- Water mist system (additional dust control)
- Enclosed cab with heated or non-heated windshield and vinyl doors
- Heated seat
- Fan for operator comfort
- Rear-view camera
- Tire flatproofing
- Fire extinguisher



SAE charger J1772



Madvac LR50 VEV⁺

Data & Performance Information

Power

Power pack	Lithium-Ion nickel manganese cobalt (Li NMC) high energy capacity, up to 28.8 kw/h
Voltage	102 volts battery packs (2)
Charger	Integrated chargers 6kW on board
Charger outlet	J1772 level 2, 240V/24A
Charging time	5 hours (15-18 h if 120-v wall socket)
Autonomy	Up to 9 hours

Litter Collection System

Type	Straight-through system compacts litter at 2:1 ratio
Litter capacity	75 gal. (284 L)
Container construction	16 gauge powder-coated steel
Vacuum hose	7 in. (178 mm)
Wander hose	Diameter: 6 in. (152 mm); length: 15 ft. (4.57 m)
Bagless system	Kevlar bin can be filled and emptied into off-the-shelf bags

Frame and Body

- Heavy gauge steel body on a welded 1/4 in. (6.35 mm) structural steel frame
- Electrostatic powder-coated paint

Dimensions

Width	48 in. (1219 mm)
Length	96 in. (2438 mm)
Height	104 in. (2641 mm)
Wheelbase	69 in. (1753 mm)
Ground clearance	10 in. (254 mm)

Vacuum System

Vacuum rating	Up to 1800 CFM
---------------	----------------

Controls

Steering	Power assisted
Propulsion	Forward, neutral, reverse; push button shifter

Traction

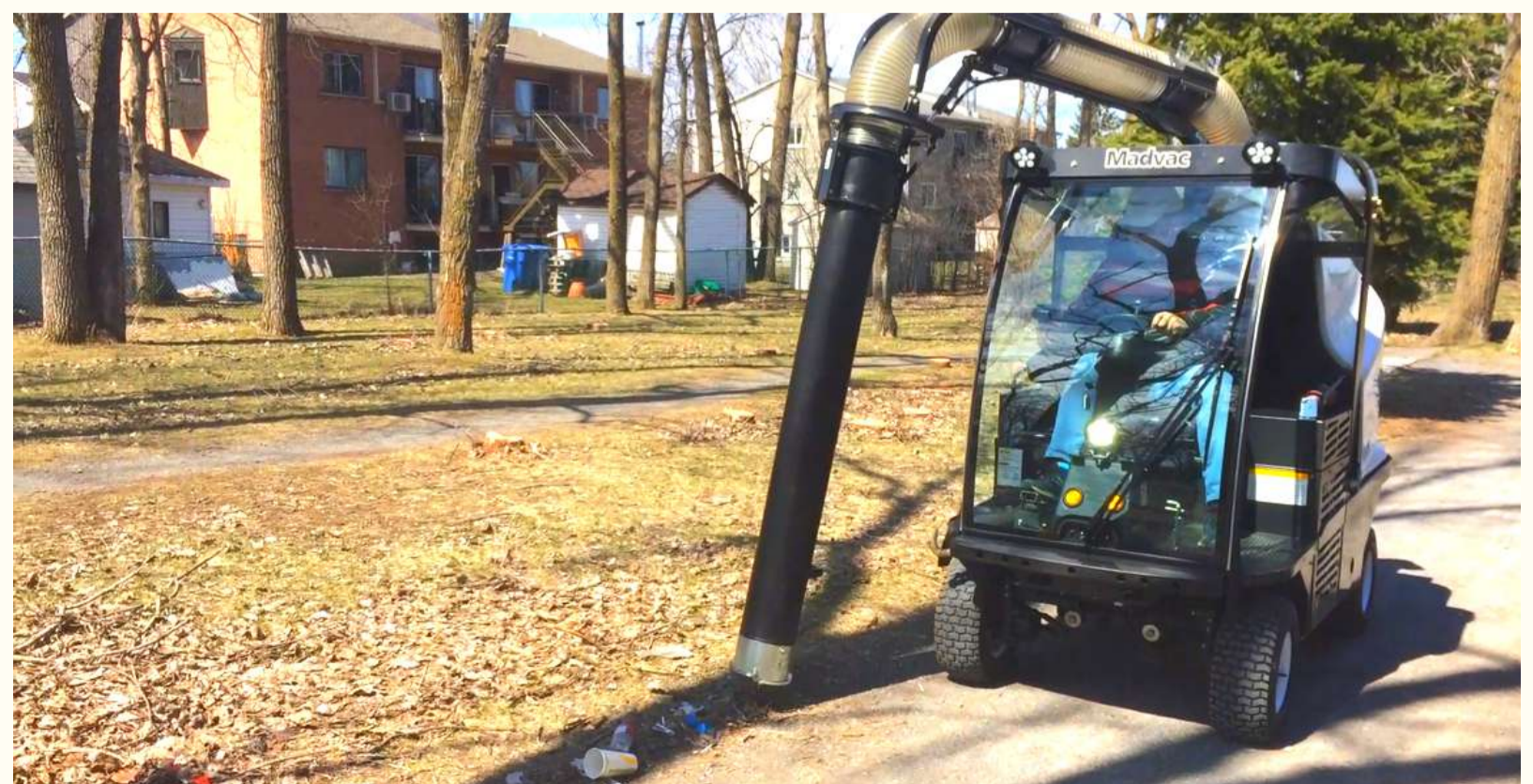
Drive	Propulsion with 17 to 1 ratio
Forward speed	12 mph (19 km/h)
Tires (all 4 wheels)	Regular 20.5 in. (521 mm); Turf 20 in. (508 mm)
Brakes	Drum service brakes with magnetic parking brake
Gradeability	11.3 degree (20%)
Curb weight	2692 lbs (1221 kg)

Suspension

Front	Leaf spring
Rear	Leaf spring

dB Rating (front)

Cabin	85 dB
10 feet away	71 dB



Proud manufacturer of the Madvac product line

Telephone:

- 1-855-651-0444 (toll free - US/Canada)
- 1-450-651-0444 (international)

Fax: 450-651-0447

Email: info@exprolink.com

Address: 2170 Rue de la Province

Longueuil QC
Canada J4G 1R7

Website: www.madvac.com

Sourcwell (US) and Canoe

(Canada) contract vendor

number: **093021-EXP**

Technical specs are subject to change without prior notice