

# Mechanical Sweeper

# BD202

All-Terrain · Robust · Easy to Operate



awarded contract vendor

[www.excelwayusa.com](http://www.excelwayusa.com)

Technical specs are subject to change without prior notice



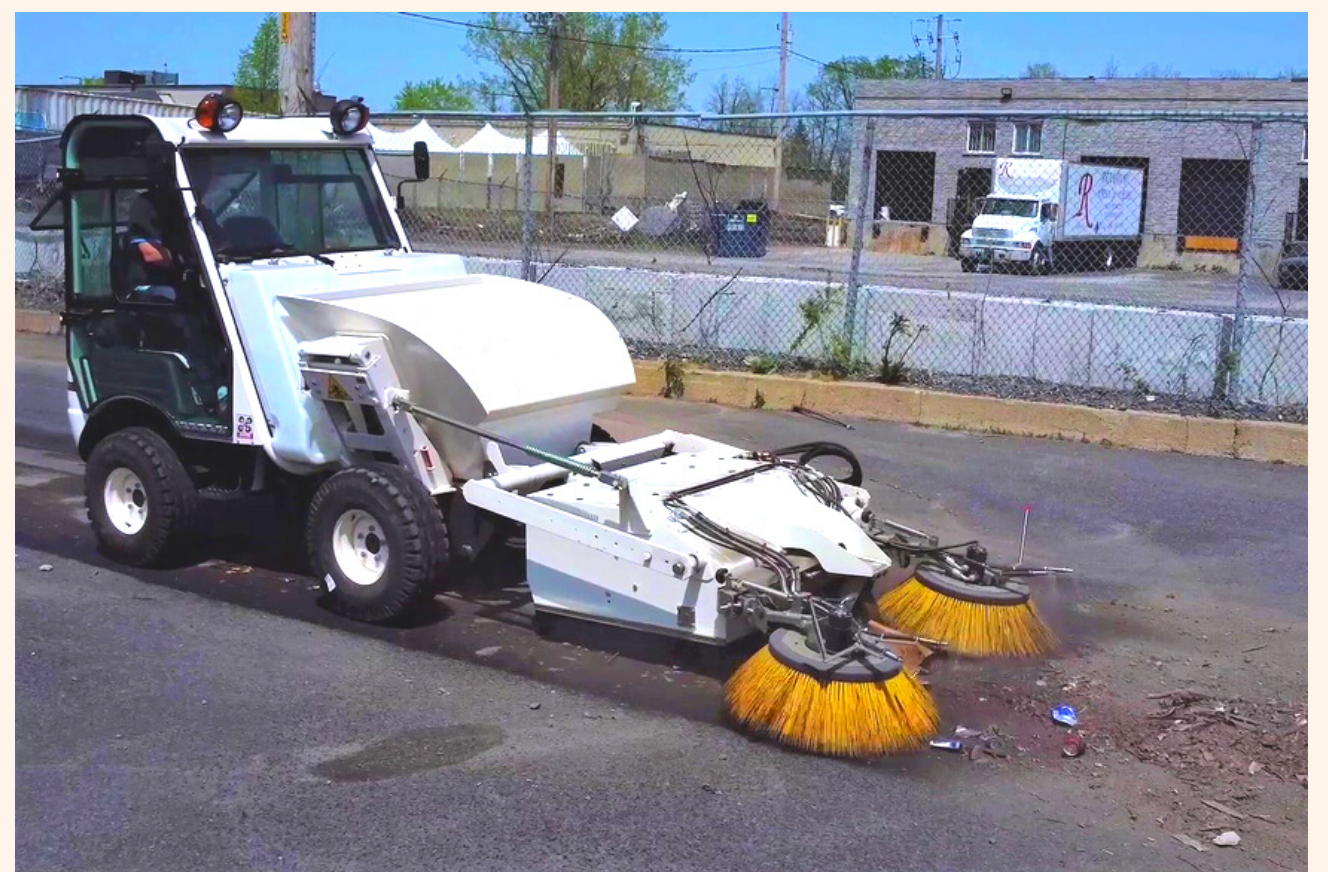
# BD202 is designed for your most challenging litter

Wet sand, broken glass, rocks, wood – this machine does it all. With a capacity of 1.3 cubic yards (1 cu m) and a side-tip / high-tip skip, it is the best option for industrial applications. The BD202 has permanent 4x4 drive as standard and hydrostatic transmission, making it perfect for both flat and the most uneven terrains.



## BD202 is the ultimate sweep and wash mobile cleaning unit for

- Cities and municipalities
- Outdoor cleaning contractors
- Airports & seaports
- Transit authorities
- Industrial property mgmt. companies
- Manufacturing facilities
- Casinos
- Commercial property mgmt. companies
- Military
- Distribution centers
- Correctional facilities





# Key attributes

- Compact and lightweight machine (5000 lbs / 2300 kg);
- Easy to trailer if required;
- Reliable, low noise and low consumption Kubota engine;
- Permanent 4-wheel drive / rear steering allows litter removal in hard to reach areas;
- Maximum sweep width 77 in. (1956 mm);
- Front brooms lateral displacement up to 15 in. (381 mm) for tight curbs;
- High seating offers excellent visibility;



- Easy to operate, few controls, ergonomic joystick;
- Optional fully glazed, roomy, sound-proof closed cabin;
- Side unloading and tipping system at 55 in. height (1400 mm);
- Optional pressure washer gun 2175 PSI;
- Tilt seat platform provides quick access to engine compartment for periodic inspection/maintenance;
- **Coming in 2023: new options for multipurpose year-round use! – snow broom | snow plow | towable salt spreader | towable cart.**

## Built to suit your needs

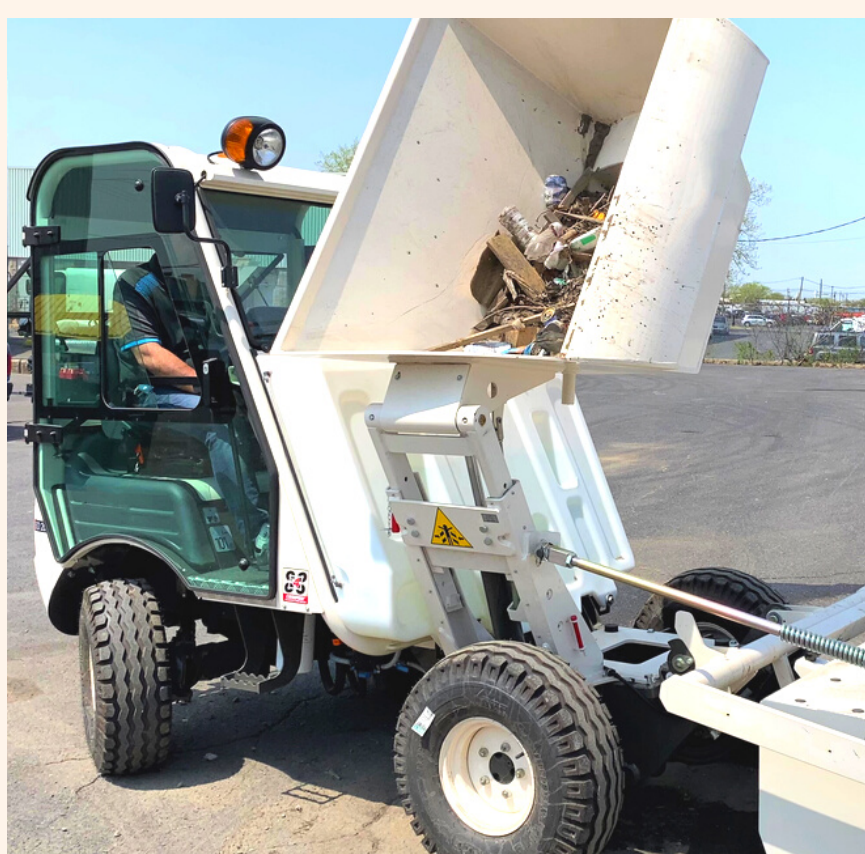
Configure the BD202 according to your specific requirements

- Soundproof closed cabin with heater
- Air conditioning
- Ergonomic, adjustable operator seat with air suspension system
- Upper door in hopper with automatic opening in loading operation.
- Pressure washer gun
- Towing hitch ball with power socket

**To request a quote**

**[www.excelwayusa.com](http://www.excelwayusa.com)**

**Models – BD202 – request a quote**







# Excelway® BD202

## Data & Performance Information

### GENERAL

Unladen weight	5071 lbs (2300 kg)
Height	93 in. (2534 mm)
Width	77 in. (1956 mm)
Length extended	196 in. (4990 mm)
Length folded and stored	138 in. (3500 mm)

### ENGINE

Make	KUBOTA
Model	VI505-E4B
Power	18.5 kW (24.8 HP)
No. cylinders	4
Emissions	Stage V - EPA Tier 4
Consumption	6.47 L/h (1.7 gal./h)

### DRIVING

Traction	4 wheel drive
Max. speed	12.4 mph (20 km/h)
Max. operation speed	12.4 mph (20 km/h)
Gradeability (at full load)	42%
Min. turning radius	165 in. (4190 mm)
Tires	Front & rear: 10.0/80-12"TL (10PR)

### WASTE HOPPER

Capacity	1.17 cu.yd. (900 L)
Payload	4,409 lbs (2,000 kg)
Material	Steel
Tipping height	59 in. (1500 mm)
Tipping width	35.4 in. (900 mm)

### SWEEPING SYSTEM

Sweeper unit capacity	65 gal. (245 L)
No. brooms	3
Main broom dimension	44 in. (1118 mm)
Side brooms (2) dimension	30 in. (762 mm) each
Port and arms material	Steel
Total sweep path	77 in. (1956 mm)
Sprinklers	4

### WATER

Capacity	92.5 gal. (350 L)
Material	Rotomolding HDPE
Water pump flow	3.3 gal./min (12.5 L/min)
High pressure washer	3.3g/m (12.5L/min) 2175 psi (150 bar)
Low pressure dust control	1.9g/m (7.19l/m) 36.25 PSI/ 2.5 bar

### OTHER

Transmission	2 speed hydrostatic transmission Permanent 4 wd "COMPEN® SYSTEM"
Steering	Hydraulic steering
Cabin features	ROPS/FOPS Right hand drive Front windscreen, front wipers Seat with adjustable height and distance with rolling safety belt 2nd seat for passenger Rotating beacon Rear-view mirror
Brakes	Oil immersed multidisc
Safety	Anti-vandal protection Audible reverse warning



Proud manufacturer of the Excelway product line

Telephone:

- 1-855-651-0444 (toll free - US/Canada)
- 1-450-651-0444 (international)

Fax: 450-651-0447

Email: [info@exprolink.com](mailto:info@exprolink.com)

Address: 2170 rue de la Province, Longueuil QC, Canada J4G 1R7

Website: [www.excelwayusa.com](http://www.excelwayusa.com)

Sourcwell (US) and Canoe (Canada) contract vendor number: 093021-EXP