



BD202



B200


M200
(B200 with no brooms)


B400 VeV

Power	Diesel	Diesel	Diesel	Electric
Sweeping Type	Mechanical	Vacuum	N/A	Vacuum
3 rd Brush	N/A	Optional	N/A	Optional
Water Tank Capacity	92.5 gal. (350 L)	79 gal. (300 L)	N/A	152 gal. (580 L)
Traction / Steering	4WD/RWS	4WD optional/4WS	4WD/4WS optional	Optional 4WD/FWS
Multi-Purpose	Optional	Optional	Yes	Yes
Close Cabin	Optional	Yes	Yes	Yes
Climate Control	AC & Heating (optional)	AC & Heating	AC & Heating	AC & Heating
Hopper Capacity	1.17 cu yd. (0.9 cu m.)	2.6 cu yd. (2 cu m.)	By application	5.2 cu yd. (4 cu m.)
Payload	2,200 lbs (1000 kg)	3,300 lbs (1,500 kg)	5,500 lbs (2,500 kg)	4,850 lbs (2,200 kg)
GWVR	7275 lbs (3,300 kg)	11,023 lbs (5,000 kg)	11,023 lbs (5,000 kg)	14,110 lbs (6,400 kg)
Height	90 in (2,286 mm)	79 in (2,006 mm)	79 in (2,006 mm)	90 in (2,286 mm)
Width	86 in. (2,184 mm)	52 in. (1,320 mm)	52 in. (1,320 mm)	67 in. (1,702 mm)
Wander Hose	N/A	Optional	Optional	Optional
Power Wash	Optional	Optional	Optional	Optional
Engine / Power Pack	Kubota V1505-E4B	DEUTZ TCD 2.2 No DEF RQD	DEUTZ TCD 2.2 No DEF RQD	Lithium-Ion NMC
Maximum Speed	12.4 mph (20 km/h)	15.5 & 25 mph (25 & 40 km/h)	15.5 & 25 mph (25 & 40 km/h)	50 mph (80 km/h)
Gross Rated Power	18.5 kw (24.8 HP)	55 kw (75 HP)	55 kw (75 HP)	Electric: up to 100 kw/h

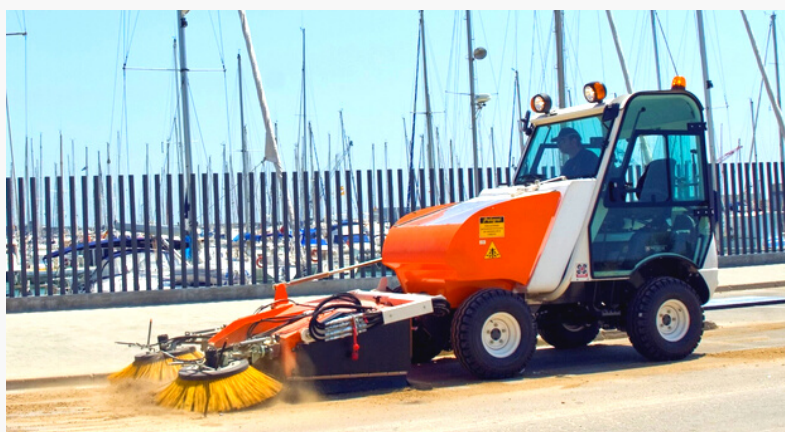
Technical specs are subject to change without prior notice

ALL EXCELWAY MODELS

- Have water, and water recirculation filtration system
- 2 seats in cab
- Lifespan 10 to 12 years
- Tip to dump container
- No CDL required to operate
- Spare parts shipped within 48 hours



KEEP YOUR CITY **CLEAN & SAFE**



EXCELWAY CUSTOMERS

- Cities and municipalities
- Outdoor cleaning contractors
- Airports & Seaports
- Educational and sports facilities
- Transit authorities
- Healthcare services
- Industrial property management companies
- Manufacturing facilities
- Casinos
- Shopping malls
- Commercial property management companies
- Military
- Distribution centers
- Amusement parks
- Correctional facilities

CONTACT

- 1-855-651-0444
(toll free - USA/Canada)
- 1-450-651-0444 (international)
- info@exprolink.com