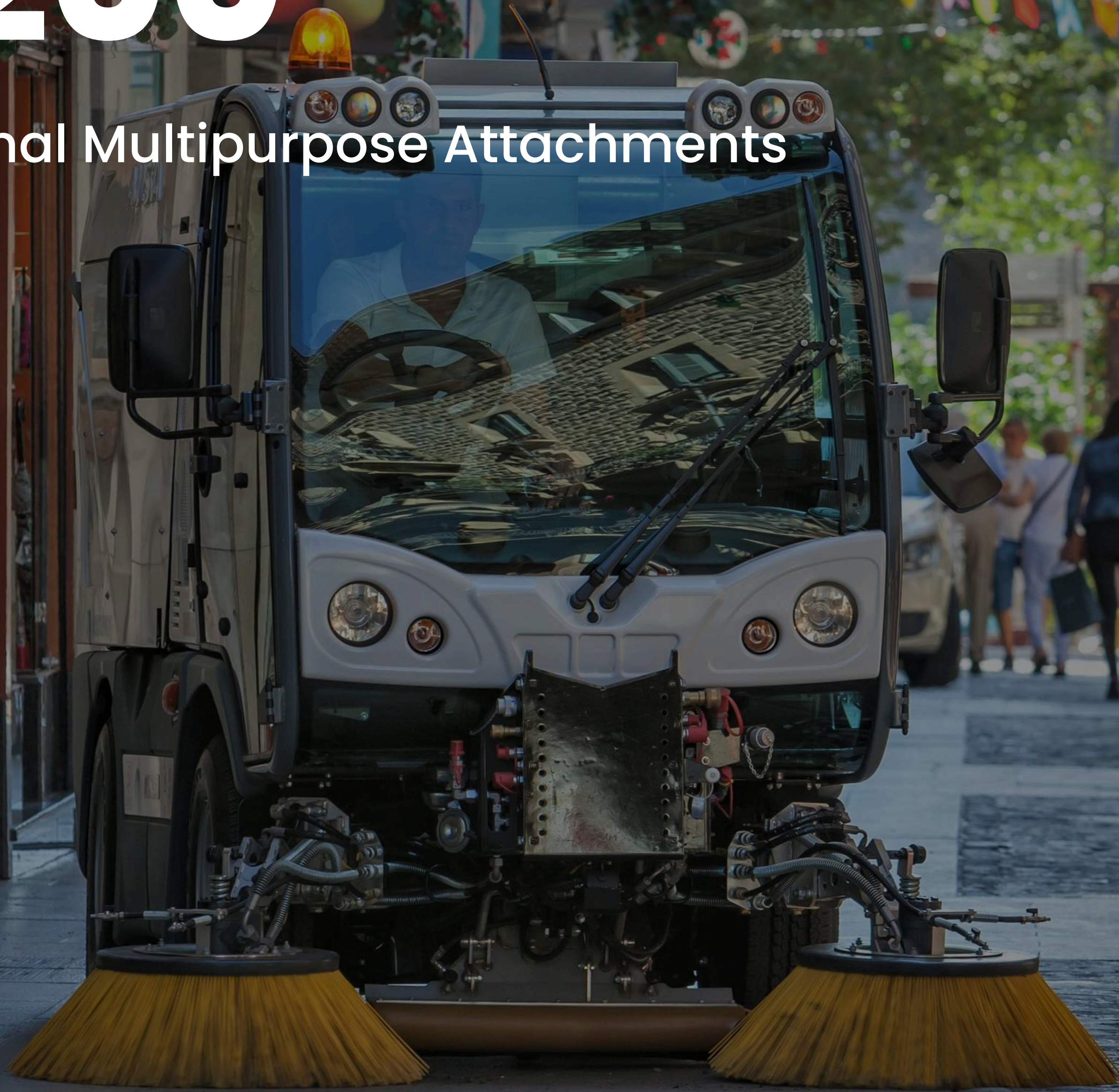


Vacuum Sweeper

# B200

Optional Multipurpose Attachments



Jan 2025



awarded contract vendor

[www.excelwayusa.com](http://www.excelwayusa.com)

Technical specs are subject to change without prior notice



# The ultimate compact sweeper

B200 is a truly unique machine: exceptional suction power, robust, reliable, ready to take on your most challenging litter/debris pick-up operations.

Customize your B200 with 2 or 3 brooms, a retractable wander hose, a pressure washer gun, and several other features designed to improve functionality, boost operator comfort, and enhance safety.



In short, B200 offers the possibility of creating a truly personalized, outstanding sweeper to meet your unique requirements – and that's only half the story:

B200 can also be a 100% cargo bed, snowplow, salt spreader, washer bar, and more.

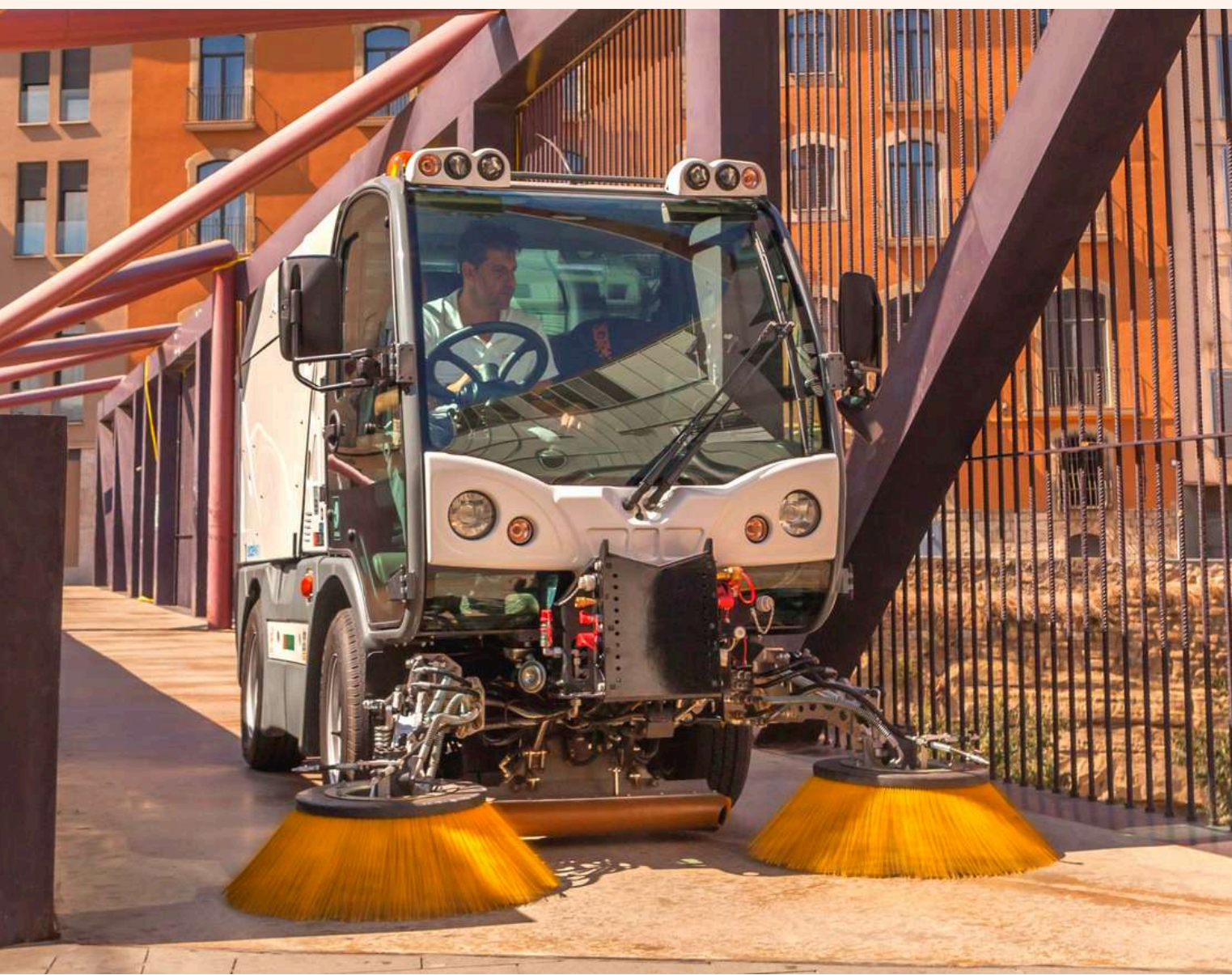
The unique, B200 patented iLink system allows you to quickly transform your sweeper into a true, multiservice year-round workhorse.

Imagine the possibility of having a reduced fleet while maintaining all your cleaning and maintenance capabilities. Imagine the eco efficiency gains, and cost savings too.

This is what the B200 can do – for you.



# A truly unique machine



The **B200-S** (sweeper only) and **B200-M** (sweeper with multipurpose attachments) stand out as the ONLY compact vehicles in their class made in North America. This key advantage ensures competitive pricing, lower shipping costs, fewer transit delays or damage, quicker factory turnaround, and reliable support from your local dealer. Parts and consumables are also more affordable, reducing long-term maintenance costs and maximizing the machine's value over its lifetime.

Unlike similar models, the B200-M is a true 100% performance sweeper with fully capable attachments. It can snowplow, salt spread, and wash just as effectively as the dedicated equipment you currently use. The B200-M gets the job done while replacing multiple vehicles in your fleet—or expands your capabilities without increasing the size of your fleet.





# B200-S key attributes

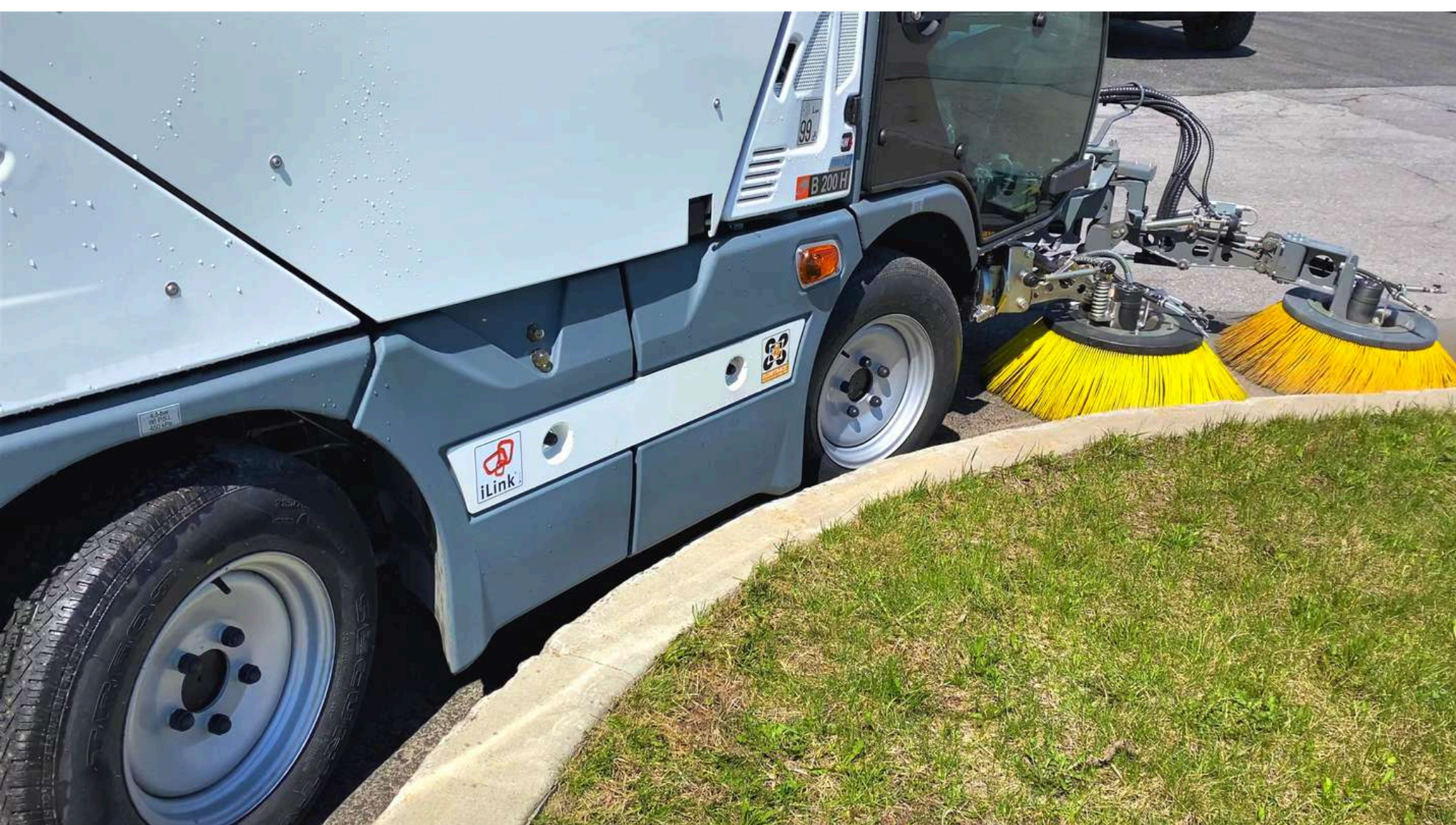


- Only 52 in. wide (1320 mm) x 83.5 in. tall (2212 mm) – ideal for tight-space areas, off-road applications, parking decks, and more
- Hopper capacity 2.6 cu yd. (2 M<sup>3</sup>) with payload 3,300 lbs (1500 kg) and container tipping height 62 in. (1580 mm)
- Optional 3rd broom - can be a weed brush
- Sweeping path up to 98 in. (2500 mm)
- Patented stainless steel vacuum head allows collection of larger-size debris without any action from the driver
- Machine can vacuum litter while in reverse mode
- Spacious, comfortable cabin with large glass windows provide excellent visibility
- Touch control screen with intuitive command layout (upper and lower CAN keypads, 3-axis joysticks) makes the B200 easy to operate
- Direct view of both the vacuum head and hopper from inside the cab
- Complete street legal lighting package
- Optional retractable wander hose and pressure washer gun for additional cleaning



# B200-S key attributes

- Reliable, 55kw (75 HP) DEUTZ Stage V - Tier 4 engine
- No DEF required for less parts and maintenance
- All-wheel drive vehicle with 4 wheel steer
- Maximum speed: 25 mph / 12 mph (40 km/h / 20 km/h)
- Arrow-shaped chassis for better maneuverability, suspension, and operator comfort
- 4-wheel steer offers external turning radius of only 106 in. (2700 mm)
- Integrated diagnostics menu for quick and simplified troubleshooting
- Centralized lubrication manifolds (auto-lube)
- B200 lifespan 10-to-12 years
- OEM parts shipped within 48 hours
- No CDL required to operate

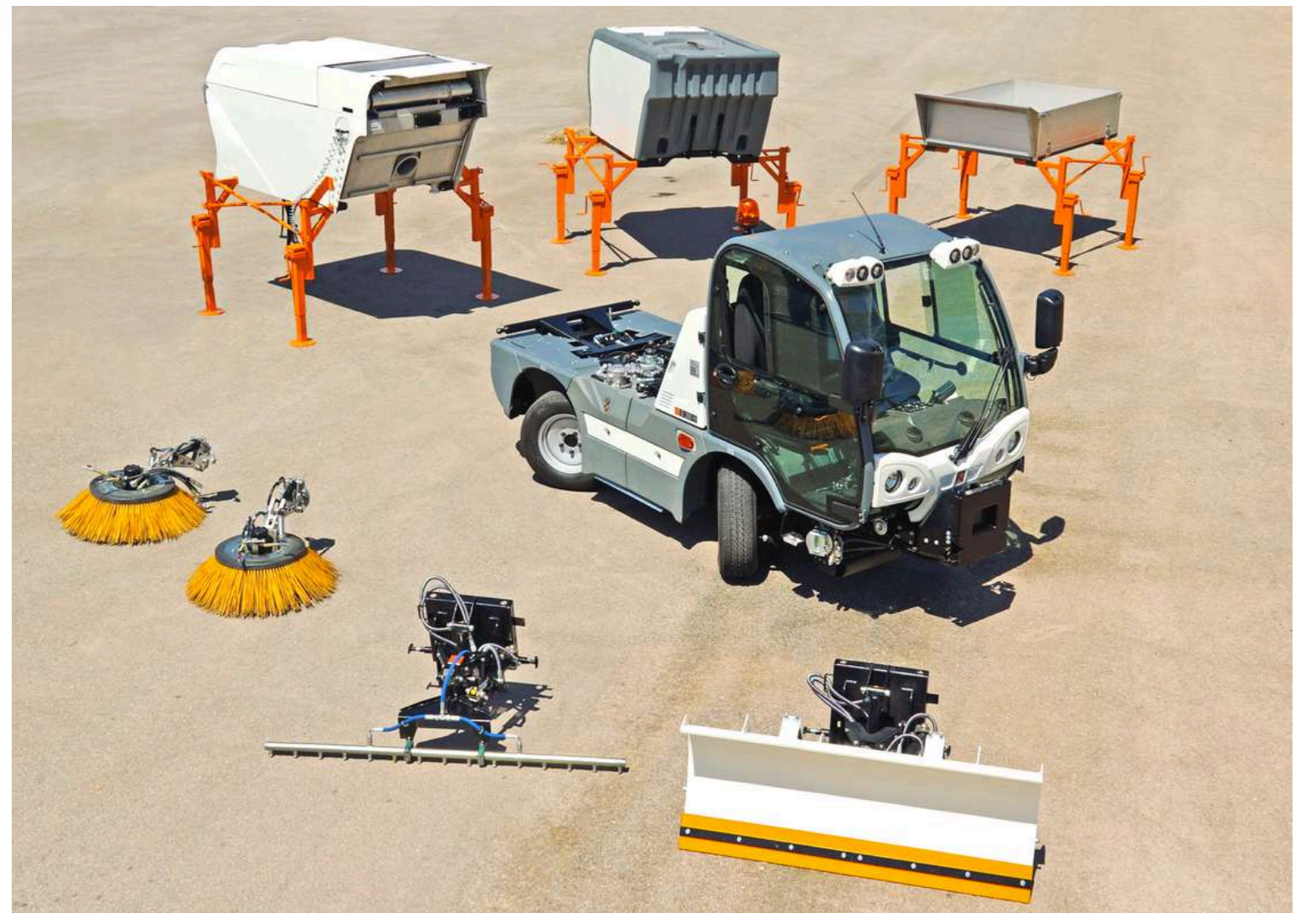


To request a quote [www.excelwayusa.com](http://www.excelwayusa.com)  
Models - B200 - request a quote



# B200-M attachments

The B200-M is an exceptional year-round cleaning and maintenance vehicle. Its unique, patented iLink system instantly detects attachments, ensuring seamless operation and maximum efficiency with every task.



This quick and easy install makes B200-M one of the fastest plug-and-play compact sweeper/multiuse vehicles on the market. Available attachments include the following:



Aluminium cargo bed with fold down sides and hydraulic trilateral (rear/side) dump  
72.5" x 51.2" x 16.5" (1840 x 1300 x 420 mm)



Cold water street-washer  
spray bar | Joystick controlled  
(3-stage swiveling/telescopic)  
Rotomold plastic water tank |  
capacity 528 gal. (2000 L)



# B200-M attachments



Salt spreader | hydraulic powered | capacity 1.3 cu yd. (1 m<sup>3</sup>)



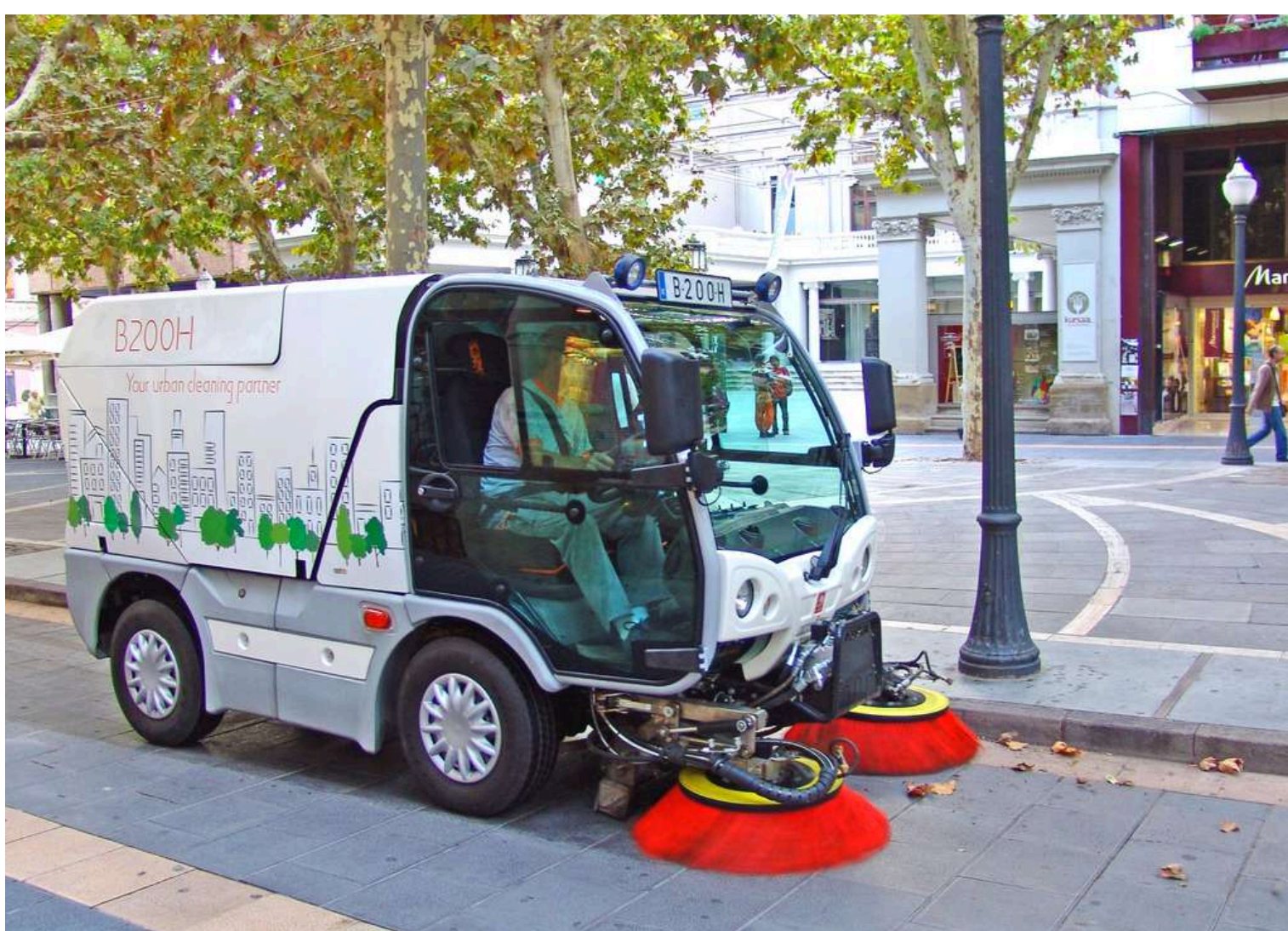
Snowplow | blade 59" (1500 mm) | hydraulic swivel | with attachment plate

To request a quote [www.excelwayusa.com](http://www.excelwayusa.com)  
Models - B200 - request a quote



# B200 is specifically designed for a multitude of road, and off-road applications such as

- Bike & pedestrian lanes
- Parking lots
- Sidewalks
- Alleys
- Pathways
- Alongside buildings
- Public markets
- Construction sites



## The ideal compact sweeper / multi-use vehicle for

- Cities and municipalities
- Outdoor cleaning contractors
- Industrial property mgmt companies
- Commercial property mgmt companies
- Airports & seaports
- Transit authorities
- Healthcare services
- Shopping malls
- Educational & sports facilities
- Manufacturing facilities
- Distribution centers
- Amusement parks and casinos
- Military
- Correctional facilities





### GENERAL

<b>Max. total weight (GWVR)</b>	11023 lbs (5000 kg)
<b>Payload</b>	3300 lbs (1500 kg)
<b>Length</b>	173 in. (4398 mm) B200-S with parked brooms and container 154 in. (3917 mm) B200-M with no attachments
<b>Width</b>	61.5 in. (1560 mm) B200-S with brooms 51 in. (1300 mm) B200-M with no attachments
<b>Height</b>	85.5 in. (2170 mm) B200 with bird's eye view 83.5 in. (2121mm) B200-M standard with no attachments
<b>Wheelbase</b>	75 in. (1900 mm)

### ENGINE

<b>Type</b>	DEUTZ TCD 2.2 - Stage V Tier 4
<b>Cylinders</b>	3 cylinders
<b>Gross rated power</b>	55kw (75 HP) at 2600 rpm
<b>Cooling</b>	Water-cooled
<b>Weight</b>	591 lbs (268 kg)

### POWER TRAIN

<b>Maximum driving speed</b>	25 mph / 12 mph (40 km/h / 20 km/h)
<b>Transmission</b>	Hydrostatic
<b>Gradability</b>	30%
<b>Tires</b>	225/70 R15

### BRAKING SYSTEM

<b>Hydraulic supported brakes</b>	Yes
<b>Service brakes</b>	Dedicated pedal at operator's feet Charged accumulators ensuring proper function when engine is OFF  4x4 axles: Front & rear motor-integrated hydraulic brakes
<b>Parking brake</b>	Rear motor-integrated parking brake (mechanical, hydraulically actuated) dedicated switch on the overhead cabin keypad

### FUEL TANK

<b>Diesel - material</b>	HDPE HEXELL UR 6093
<b>Diesel - volume</b>	15.9 gal. (60 L)

### HYDRAULIC TANK

<b>Mutual tank for all hydraulic circuits</b>	Yes
<b>Tank volume</b>	15.9 gal. (60 L)

### WASTE HOPPER

<b>Gross volume</b>	2.6 cu yd. (2 m3)
<b>Material</b>	Stainless steel
<b>Tipping height</b>	62 in. (1580 mm)
<b>Clean water tank</b>	79 gal. (300 L)
<b>Water recirculation system</b>	Yes

### SWEEPER / VACUUM HEAD

<b>Independent brush movement controls</b>	Yes (not with 3rd brush)
<b>Variable brush pressure</b>	Yes
<b>Sprinklers per brush</b>	2
<b>Width of suction mouth</b>	28 in. (713 mm)
<b>Height of suction mouth</b>	5.5 in (140 mm)
<b>Hydraulically actuated top suction mouth clap</b>	Yes

### BRUSHES

<b>Diameter</b>	33.5 in. (850 mm)
<b>Backwards sweeping possible</b>	Yes
<b>Maximum rotation of brushes</b>	120 rpm

### 3RD BRUSH

<b>Diameter</b>	33.5 in. (850 mm)
<b>Maximum rotation of brushes</b>	60 rpm

### CABIN

<b>Seats</b>	2
<b>Air conditioning</b>	Yes
<b>Heating and ventilation system</b>	Yes
<b>Sun shades / sliding windows</b>	Yes
<b>Bottom windows for view on suction mouth and brushes</b>	Yes
<b>Rearview camera with color monitor</b>	Optional
<b>Suction mouth camera</b>	Optional
<b>Cruise control</b>	Yes
<b>2nd mounted screen</b>	Optional
<b>Bird's eye view</b>	Optional
<b>Telematics</b>	Optional

### SAFETY

<b>Complete road lighting package</b>	Yes
<b>Audible back-up warning signal</b>	Yes
<b>Warning signal for open hopper</b>	Yes
<b>Over-head lights package</b>	Optional
<b>Work lights package</b>	Optional

### RETRACTABLE WANDER HOSE

<b>Diameter</b>	5 in. (125 mm)
<b>Length</b>	13 ft. (3.96 m)

### PRESSURE WASHER GUN

35 ft. (10.7 m) retractable hose	
4.4 gal./min (17 L/min) 3625 psi (250 bar)	





Proud manufacturer of the Excelway product line

**Telephone:**

- 1-855-651-0444 (toll free - US/Canada)
- 1-450-651-0444 (international)

**Fax:** 450-651-0447

**Email:** [info@exprolink.com](mailto:info@exprolink.com)

**Address:** 1071 rue Marie Victorin, St-Bruno QC, Canada J3V 0M7

**Website:** [www.exprolink.com](http://www.exprolink.com)

**Sourcewell (US) and Canoe (Canada) contract vendor number:** 093021-EXP